



ELK Biotechnology

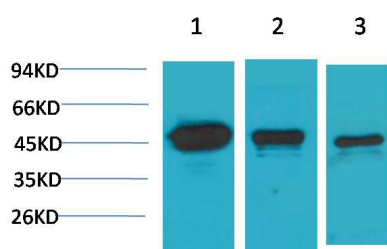
MEK2 Rabbit pAb

Catalog NO.: EA220

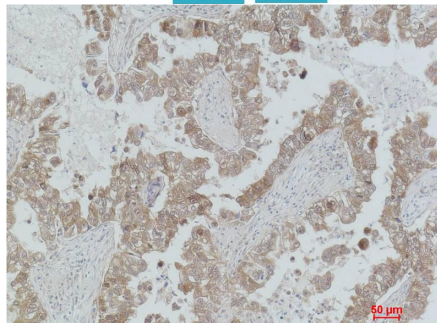
For research use only.

Overview

Product name	MEK2 Rabbit polyclonal antibody
Source	Rabbit
Applications	WB, IHC
Species reactivity	Human, Rat, Mouse
Recommended dilutions	WesternBlot:1/1000-2000 Immunohistochemistry:1/200-500 NOTE: Optimal dilutions should be determined by the end user.
Immunogen	Recombinant Protein
Species	Human
Storage	PBS with 0.02% sodium azide and 50% glycerol pH 7.4. Store at -20° C. Avoid repeated freeze-thaw cycles.
Isotype	IgG
Clonality	Polyclonal
Concentration	1 mg/ml
Observed band	45kDa
GenelD (Human)	5605
Human Swiss-Prot No.	P36507
Cellular localization	Cytoplasm, Membrane
Alternative Names	ERK activator kinase 2 antibody, MAPK kinase kinase 2 antibody, MEKK2 antibody, MKK2 antibody, PRKMK 2 antibody
Background	MEK1 and MEK2, also called MAPK or Erk kinases, are dual-specificity protein kinases that function in a mitogen activated protein kinase cascade controlling cell growth and differentiation. Catalyzes the concomitant phosphorylation of a threonine and a tyrosine residue in a Thr-Glu-Tyr sequence located in MAP kinases. Activates ERK1 and ERK2 MAP kinases.



Western blot analysis of 1) HeLa, 2)3T3, 3)PC12 with MEK2 Rabbit pAb EA220 diluted at 1:2,000.



Immunohistochemical analysis of paraffin-embedded Human Lung Carcinoma using MEK2 (EA220) Rabbit pAb diluted at 1:500.