



ELK Biotechnology

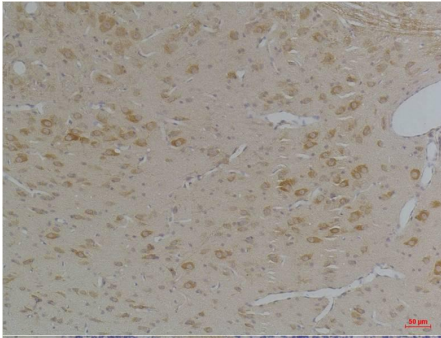
KChIP3 Rabbit pAb

Catalog NO.: EA305

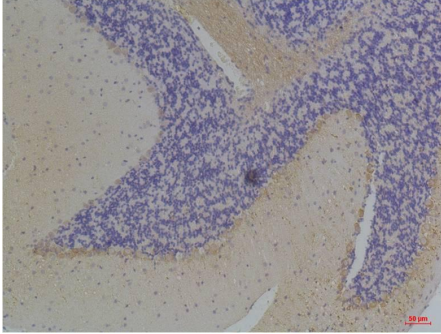
For research use only.

Overview

Product name	KChIP3 Rabbit polyclonal antibody
Source	Rabbit
Applications	IHC
Species reactivity	Human, Rat, Mouse
Recommended dilutions	Immunohistochemistry:1/100-200 NOTE: Optimal dilutions should be determined by the end user.
Immunogen	Synthetic Peptide
Species	Human
Storage	PBS with 0.02% sodium azide and 50% glycerol pH 7.4. Store at -20° C. Avoid repeated freeze-thaw cycles.
Isotype	IgG
Clonality	Polyclonal
Concentration	1 mg/ml
Observed band	29kDa
GeneID (Human)	30818
Human Swiss-Prot No.	Q9Y2W7
Cellular localization	Cell membrane, Cytoplasm, Endoplasmic reticulum, Golgi apparatus, Membrane, Nucleus
Alternative Names	KCNIP3, A type potassium channel modulatory protein 3
Background	N/A



Immunohistochemical analysis of paraffin-embedded Rat Brain Tissue using KChIP3 (EA305) Rabbit pAb diluted at 1:200.



Immunohistochemical analysis of paraffin-embedded Mouse Brain Tissue using KChIP3 (EA305) Rabbit pAb diluted at 1:200.