



ELK Biotechnology

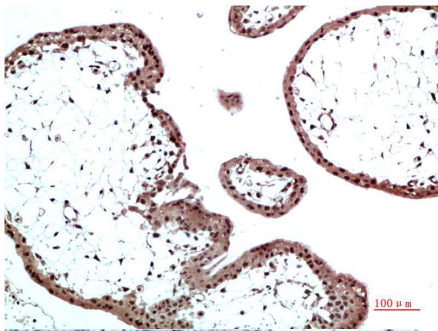
HP-1 β /CBX1 Rabbit pAb

Catalog NO.: EA333

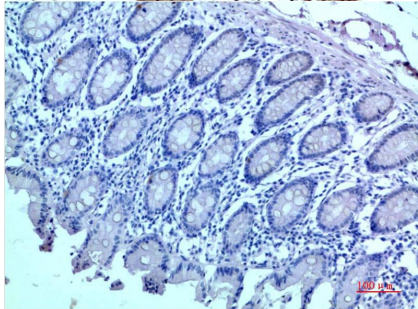
For research use only.

Overview

Product name	HP-1 β /CBX1 Rabbit polyclonal antibody
Source	Rabbit
Applications	WB, IHC
Species reactivity	Human, Mouse, Rat
Recommended dilutions	WesternBlot:1/1000-5000 Immunohistochemistry:1/200-500 NOTE: Optimal dilutions should be determined by the end user.
Immunogen	Recombinant Protein
Species	Human
Storage	PBS with 0.02% sodium azide and 50% glycerol pH 7.4. Store at -20° C. Avoid repeated freeze-thaw cycles.
Isotype	IgG
Clonality	Polyclonal
Concentration	1 mg/ml
Observed band	25kDa
GeneID (Human)	10951
Human Swiss-Prot No.	P83916
Cellular localization	Nucleus
Alternative Names	CBX, Heterochromatin protein 1 beta, HP1 beta, p25 beta
Background	Heterochromatin protein 1 (HP1) is a family of heterochromatic adaptor molecules involved in both gene silencing and higher order chromatin structure. All three HP1 family members (α , β , and γ) are primarily associated with centromeric heterochromatin.

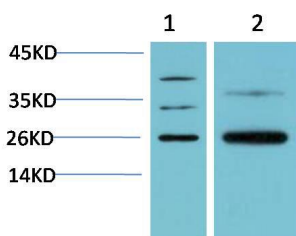


Immunohistochemical analysis of paraffin-embedded Human Placenta Tissue using HP-1 β /CBX1 (EA333) Rabbit pAb diluted at 1:500



Immunohistochemical analysis of paraffin-embedded Human Colon Carcinoma Tissue using HP-1 β /CBX1 (EA333) Rabbit pAb diluted at 1:50.

N



Western blot analysis of 1) Hela Cell Lysate, 2) Rat Brain Tissue Lysate using HP-1 β /CBX1 (EA333) Rabbit pAb diluted at 1:5000.