

## c-Src (phospho Tyr529) rabbit pAb

Cat No.:ES1293

For research use only

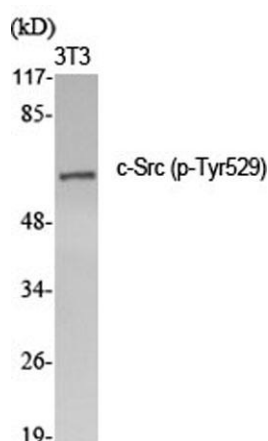
### Overview

|                          |   |
|--------------------------|---|
| Product Name             | c-Src (phospho Tyr529) rabbit pAb   |
| Host species             | Rabbit  |
| Applications             | WB;IHC;IF;ELISA   |
| Species Cross-Reactivity | Human;Mouse;Rat;Monkey  |
| Recommended dilutions    | Western Blot: 1/500 - 1/2000.<br>Immunohistochemistry: 1/100 - 1/300. ELISA:<br>1/10000. Not yet tested in other applications.  |
| Immunogen                | The antiserum was produced against synthesized peptide derived from human Src around the phosphorylation site of Tyr529. AA range:487-536   |
| Specificity              | Phospho-c-Src (Y529) Polyclonal Antibody detects endogenous levels of c-Src protein only when phosphorylated at Y529.   |
| Formulation              | Liquid in PBS containing 50% glycerol, 0.5% BSA and 0.02% sodium azide.   |
| Storage                  | Store at -20°C. Avoid repeated freeze-thaw cycles.  |
| Protein Name             | Proto-oncogene tyrosine-protein kinase Src  |
| Gene Name                | SRC   |
| Cellular localization    | Cell membrane ; Lipid-anchor . Mitochondrion inner membrane . Nucleus . Cytoplasm, cytoskeleton . Cytoplasm, perinuclear region . Cell junction, focal adhesion . Localizes to focal adhesion sites following integrin engagement (PubMed:22801373). Localization to focal adhesion sites requires myristoylation and the SH3 domain (PubMed:7525268). Colocalizes with PDLIM4 at the perinuclear region, but not at focal adhesions (PubMed:19307596). . |
| Purification             | The antibody was affinity-purified from rabbit antiserum by affinity-chromatography using epitope-specific immunogen.   |
| Clonality                | Polyclonal  |
| Concentration            | 1 mg/ml   |

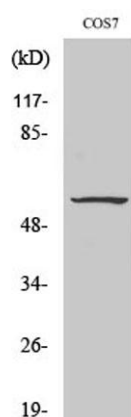




|                                |  |
|--------------------------------|--|
| <b>Observed band</b>           | 59kD   |
| <b>Human Gene ID</b>           | 6714   |
| <b>Human Swiss-Prot Number</b> | P12931   |
| <b>Alternative Names</b>       | SRC; SRC1; Proto-oncogene tyrosine-protein kinase Src; Proto-oncogene c-Src; pp60c-src; p60-Src  |
| <b>Background</b>              | This gene is highly similar to the v-src gene of Rous sarcoma virus. This proto-oncogene may play a role in the regulation of embryonic development and cell growth. The protein encoded by this gene is a tyrosine-protein kinase whose activity can be inhibited by phosphorylation by c-SRC kinase. Mutations in this gene could be involved in the malignant progression of colon cancer. Two transcript variants encoding the same protein have been found for this gene. [provided by RefSeq, Jul 2008], |

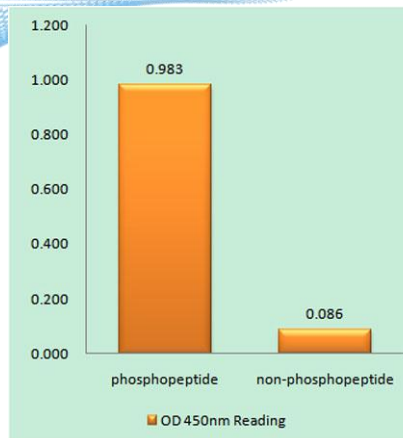


Western Blot analysis of various cells using Phospho-c-Src (Y529) Polyclonal Antibody diluted at 1:2000



Western Blot analysis of COS7 cells using Phospho-c-Src (Y529) Polyclonal Antibody diluted at 1:2000





Enzyme-Linked Immunosorbent Assay (Phospho-ELISA) for Immunogen Phosphopeptide (Phospho-left) and Non-Phosphopeptide (Phospho-right), using Src (Phospho-Tyr529) Antibody

Immunohistochemistry analysis of paraffin-embedded human breast carcinoma, using Src (Phospho-Tyr529) Antibody. The picture on the right is blocked with the phospho peptide.

